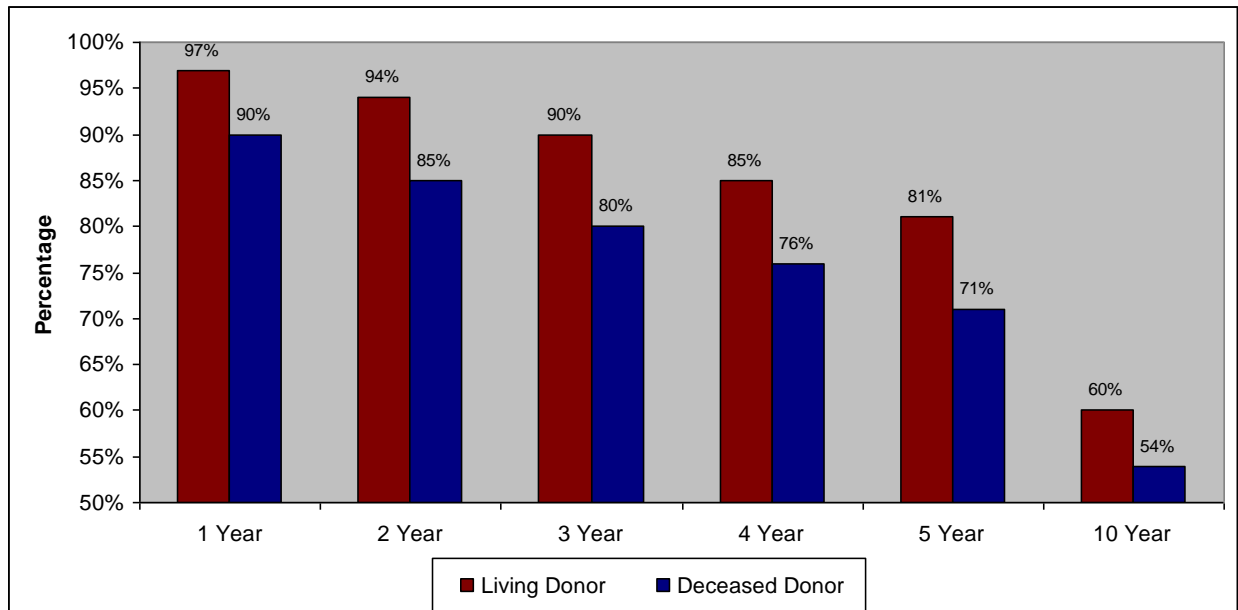


Kidney Transplant Statistics

“Graft survival” means the length of time the new kidney works after the transplant surgery. This is different than “patient survival” which refers to the patient being alive. Many things affect how long your new kidney will work. For example, if your kidney came from a living donor it will typically last longer than a kidney that came from a deceased donor.

Below are the adult kidney graft survival rates for living and deceased donor kidneys at UW Health. For the most up to date information on both patient and kidney graft survival rates here and at other transplant centers please refer to our website: www.uwhealth.org/transplant or the United Network for Organ Sharing (UNOS) website: www.unos.org.

Adult Kidney Graft Survival Rates 2000 - 2010



Source: UW Health Transplant database.

Represents the total number of kidney transplants from 1/1/2000 through 12/31/2010. Includes all kidneys transplanted including multi-organ transplants.