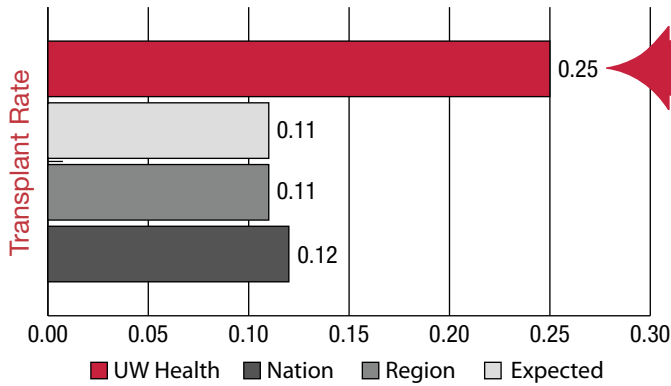


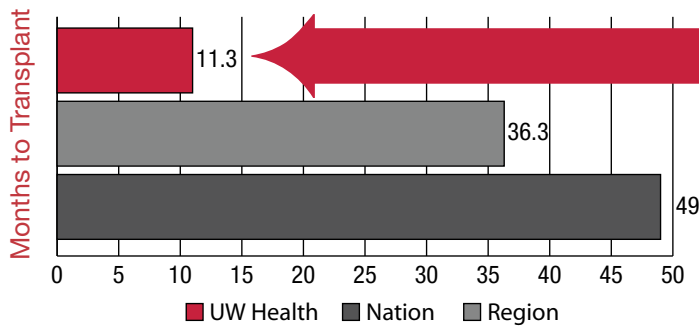
Patients who list with the UW Health Kidney Transplant Program are more likely to get a transplant, will spend less time waiting and will enjoy excellent outcomes.

Transplant Rate*



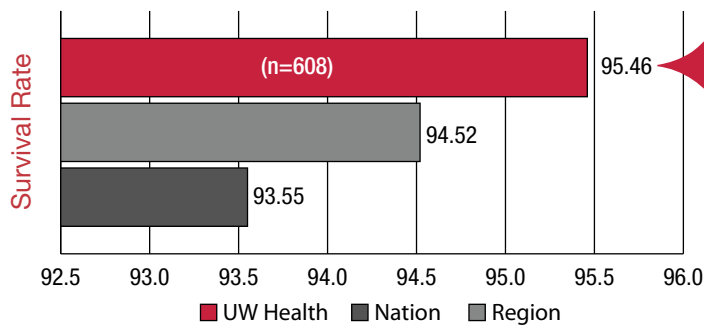
Our patients are twice as likely to get a transplant.

Wait Time to Transplant**



Our wait time is significantly shorter.

Excellent Outcomes***



Our outcomes are better.

UW HEALTH KIDNEY TRANSPLANT PROGRAM

To be listed with our program, or to learn about multiple listing, contact us today.

phone: (608) 265-0275
email: transplant@uwhealth.org
online: uwhealth.org/transplant
click on referrals

or fax this form to:
Amanda Roller
UW Health Transplant
(608) 265-5568

Name _____

Phone _____

Email _____

Data sources:

*This rate is deemed statistically "significantly higher than expected" by the Scientific Registry of Transplant Recipients (srtr.org) which means that this difference is unlikely due to random chance, and probably represents a real difference from the expected rate. Regional averages include transplant centers in WI, IL, MN, ND, SD. Data source: Scientific Registry of Transplant Recipients (srtr.org). Data published July 2011. Represents patients on the waitlist from 1/1/10 – 12/31/10 who received a kidney from a deceased donor.

**This data shows the median time to transplant, calculated as the months after wait listing during which time 50 percent of all patients initially wait listed received a transplant. The remaining 50 percent of patients were either still waiting for a transplant or were removed from the waitlist. Regional averages include transplant centers in WI, IL, MN, ND, SD. Patients registered on the waitlist between 1/1/05 – 6/30/10. Data Source: Scientific Registry of Transplant Recipients (srtr.org). Data published July 2011.

***This data represents the one-year graft survival rate for patients transplanted between 1/1/08 – 6/30/10. Data Source: Scientific Registry of Transplant Recipients (srtr.org). Data published July 2011.

