

DEPARTMENT OF UROLOGY

UNIVERSITY OF WISCONSIN SCHOOL OF MEDICINE AND PUBLIC HEALTH



INNOVATIVE RESEARCH. OUTSTANDING CARE.

The Department of Urology at the UW School of Medicine and Public Health is ranked 19th in the nation according to *U.S. News and World Report*. The leading program offers comprehensive multidisciplinary urologic care in conjunction with innovative research and teaching. Urologists at UW Health perform thousands of complex and unique procedures each year, but we measure our success one patient at a time. Our department has a dedicated and experienced team working to ensure the best possible patient care every day while remaining focused on identifying new treatments and cures for current and future generations.

For immediate assistance, please call the Access Center at (608) 263-6798 or (800) 472-0111. In addition, we offer direct telephone and electronic access to providers for patient consultation.

- Patient appointment numbers are listed inside this guide.
- An up-to-date listing of our faculty, including their bios and specialties, can be found at uwhealth.org/urology.
- Our Provider Quick Reference Tool for Smart Phones is available for referring providers.

UWHealth



DEPARTMENT OF UROLOGY FACULTY AND STAFF

ADULT UROLOGY



E. Jason Abel, MD, FACS

Location:
UWHC (608) 263-4757
Genitourinary Cancer,
Minimally Invasive Surgery



Sara L. Best, MD

Location:
UWHC (608) 263-4757
Kidney Stones, Minimally
Invasive Surgery



Ashli Breitbart, APNP

Location:
UWHC (608) 263-4757



Jenna Brink, PA-C

Locations:
UWHC (608) 263-4757
1SP (608) 287-2900



Wade Bushman, MD, PhD

Location:
UWHC (608) 263-4757
Voiding Dysfunction/
Incontinence



Kristin Doerfer, APNP

Location:
UWHC (608) 263-4757



Tracy M. Downs, MD, FACS

Location:
UWHC (608) 263-4757
Genitourinary Cancer,
Minimally Invasive Surgery



Andrew K. Graf, MD

Locations:
1SP (608) 287-2900
Outreach
Benign Prostatic
Hyperplasia,
General Urology



Daniel R. Gralnek, MD

Locations:
1SP (608) 287-2900
UWHC (608) 263-4757
Outreach
Hypogonadism,
Men's Urologic Health



Sean P. Hedican, MD

Locations:
UWHC (608) 263-4757
Outreach
Kidney Stones,
Minimally Invasive Surgery



Theresa Hollnagel, PA-C

Location:
UWHC (608) 263-4757



David F. Jarrard, MD

Location:
UWHC (608) 263-4757
Genitourinary Cancer,
Minimally Invasive Surgery



Roy A. Jhagroo, MD

Location:
KC (608) 270-5656
Kidney Stone Prevention



Bunmi Kumapayi, APNP

Location:
UWHC (608) 263-4757



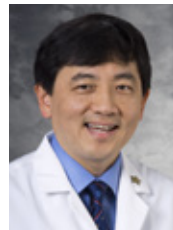
Granville L. Lloyd, MD

Locations:
1SP (608) 287-2900
Outreach
General Urology,
Minimally Invasive Surgery



Sarah E. McAchran, MD

Locations:
UWHC (608) 263-4757
1SP (608) 287-2900
Outreach
Voiding Dysfunction/
Incontinence, Women's
Pelvic Wellness



**Stephen Y. Nakada, MD,
FACS**

Department Chair
Locations:
UWHC (608) 263-4757
Outreach
Kidney Stones, Minimally
Invasive Surgery



David R. Paolone, MD

Locations:
1SP (608) 287-2900
Outreach
Genitourinary Cancer,
Men's Urologic Health

ADULT UROLOGY CONTINUED



Kristina Penniston, PhD, RD
Locations:
AFCH (608) 263-6420
UWHC (608) 263-4757
Kidney Stones, Nutrition



Kyle A. Richards, MD
Location:
UWHC (608) 263-4757
Genitourinary Cancer,
Minimally Invasive Surgery



Susette Thompson, PA-C
Location:
UWHC (608) 263-4757



Anne Walsh, PA-C
Location:
1SP (608) 287-2900



John D. Wegenke, MD
Location:
1SP (608) 287-2900
Benign Prostatic
Hyperplasia,
General Urology



Daniel H. Williams, IV, MD
Locations:
UWHC (608) 263-4757
Generations (608) 824-6160
Outreach
Male Infertility,
Men's Urologic Health

PEDIATRIC UROLOGY



Sarah Brunker, APNP
Locations:
AFCH (608) 263-6420
EC (608) 263-6420
Outreach



Ann Byrne, APNP
Locations:
AFCH (608) 263-6420
EC (608) 263-6420
Outreach



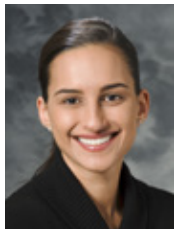
**Patrick H. McKenna, MD,
FACS, FAAP**
Division Chief
Locations:
AFCH (608) 263-6420
Outreach



Bruce L. Slaughenhaupt, MD
Locations:
AFCH (608) 263-6420
Outreach



Ruthie R. Su, MD
Locations:
AFCH (608) 263-6420
EC (608) 263-6420
Outreach
Minimally Invasive Surgery



Patricia Thaker, APNP
Locations:
AFCH (608) 263-6420
EC (608) 263-6420
Outreach

RESEARCH



Dale E. Bjorling, DVM
Prostate Biology



William A. Ricke, PhD
Prostate Biology

PRACTICE LOCATION KEY

- UWHC = UW HOSPITAL AND CLINICS
- 1SP = 1 S. PARK STREET
- AFCH = AMERICAN FAMILY CHILDREN'S HOSPITAL
- EC = EAST CLINIC
- KC = KIDNEY CLINIC