

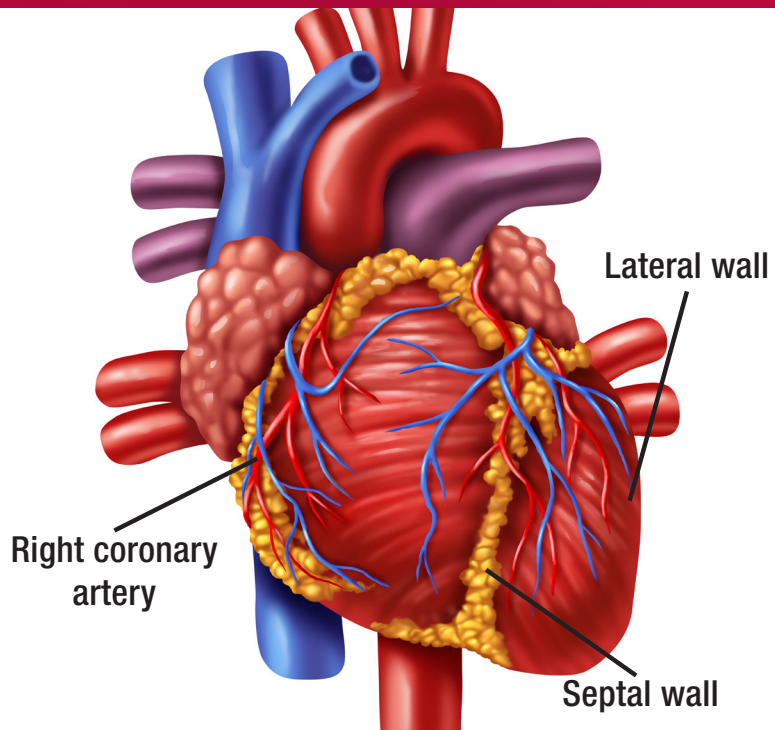
STEMI 12 Lead Identification

Typical heart attack symptoms

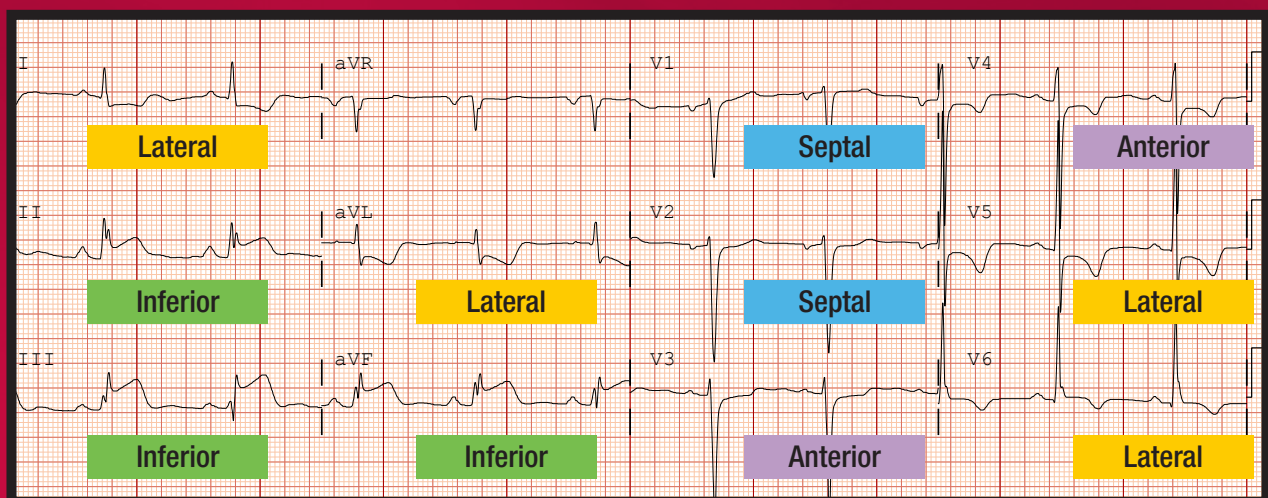
- Chest pain or pressure
- Pain in back, arms, shoulders, jaw, neck and/or abdomen
- Dyspnea
- Diaphoresis
- Palpitations
- Nausea/vomiting

Atypical symptoms

- Unusual fatigue
- Weakness
- Altered mental status
- Dizziness
- Syncope



12 LEAD ECG AND CORRESPONDING HEART WALLS



ECG EXAMPLE: INFERIOR WALL STEMI