

12 Lead Placement

ECGs are Critical

- Acquire ECG < 5 minutes
- Relay findings to hospital immediately
- Consider additional resources

ECG for all possible heart pain patients

- Typical pain over age 30
- Atypical symptoms over age 50

V1: 4th ICS

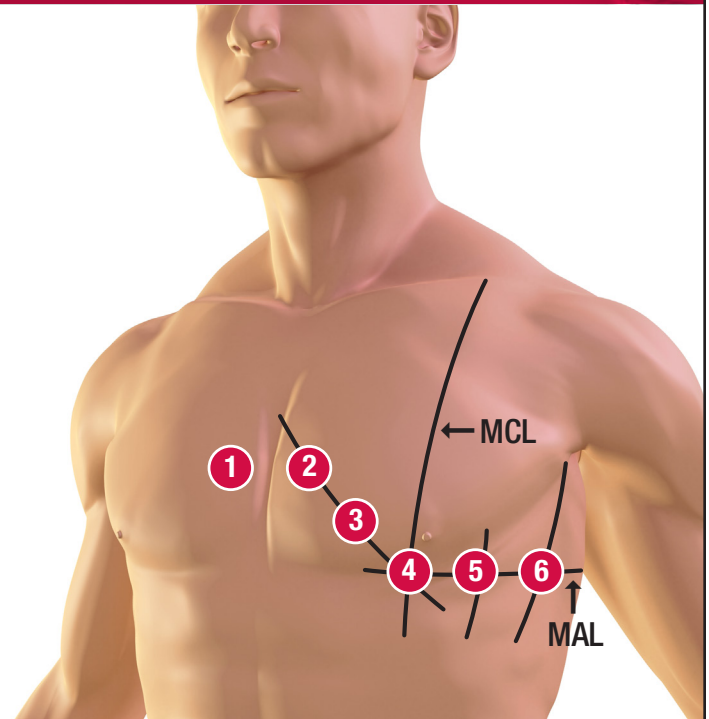
V2: 4th ICS

V3: Between V2 and V4

V4: 5th ICS MCL

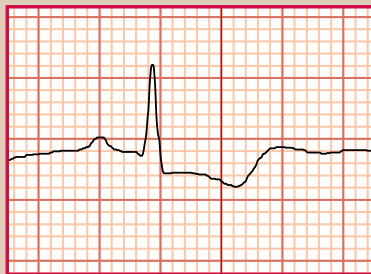
V5: 5th ICS

V6: 5th ICS MAL



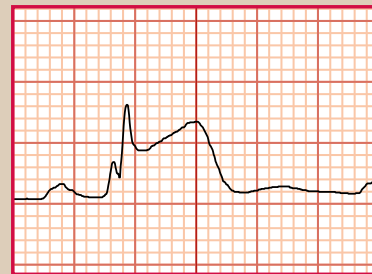
WHAT IS ISCHEMIA?

- Partial blockage of blood flow/inadequate blood supply
- Decreased oxygen to heart
- ST-segment depression
- T-wave inversion



WHAT IS INFARCT?

- Complete blockage of flow/no blood supply
- No oxygen supply to heart muscle
- ST-segment elevation
- Death of tissue/permanent after 12 hours



ECG DIAGNOSIS OF ST ELEVATION MYOCARDIAL INFARCTION (STEMI)

- One millimeter or more (one small box)
- Present in two anatomically contiguous leads (next to one another on the heart)