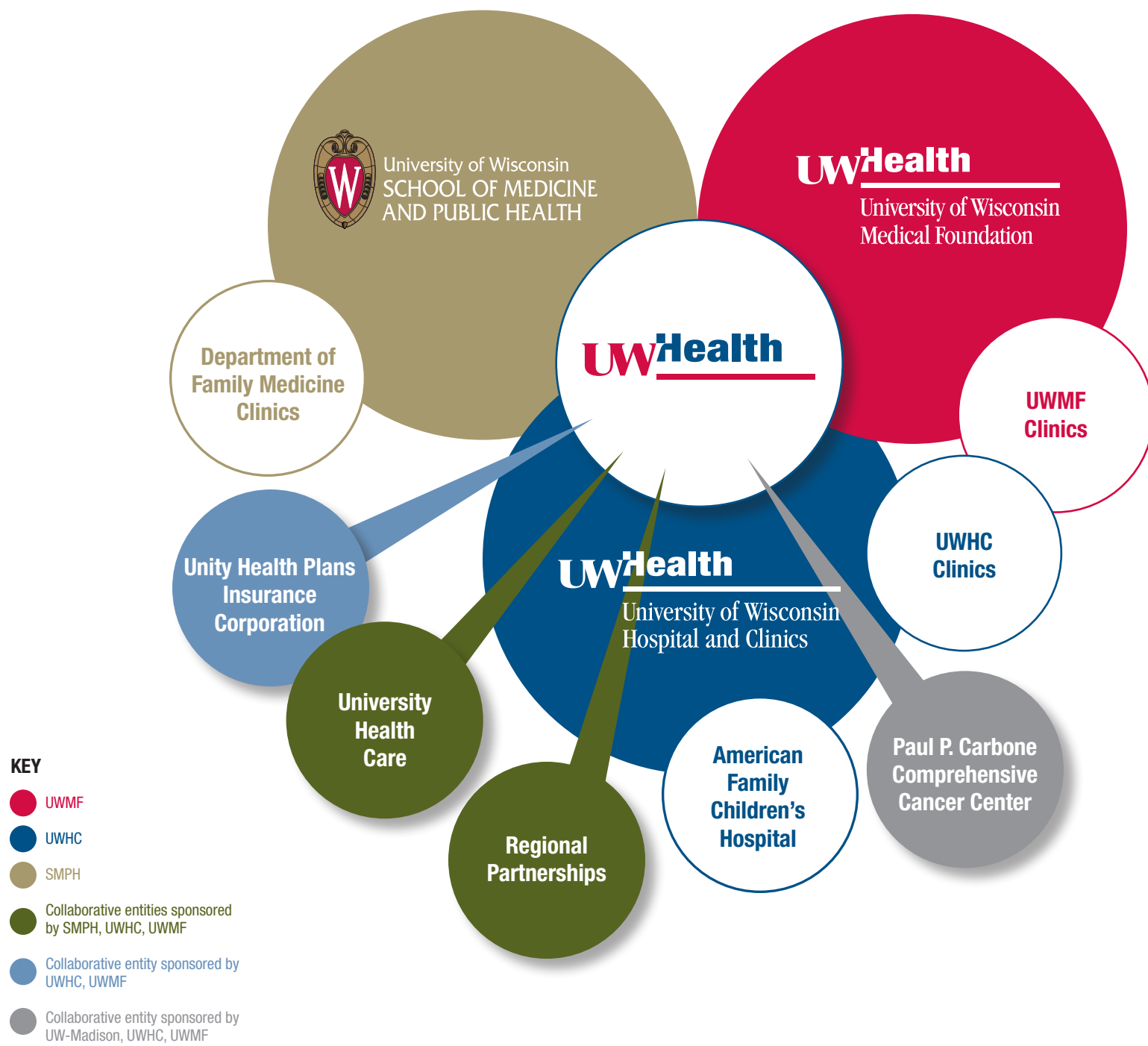


Understanding UW Health



UW HEALTH

UW Health is an academic health system which includes:

- **University of Wisconsin School of Medicine and Public Health (UWSMPH)**
- **University of Wisconsin Hospital and Clinics (UWHC)**
- **University of Wisconsin Medical Foundation (UWMF)**

The UW Health mission is to meet the health needs of Wisconsin and beyond through comprehensive excellence in education, research, patient care and community service

UW HOSPITAL AND CLINICS

- 468-bed tertiary care facility with one of nation's largest transplant programs
- An ACS-verified Level One trauma facility for both pediatric and adult patients, with Med Flight helicopters and an ACS-verified burn center
- Approximately 6,800 full- and part-time employees at 12 clinical and nonclinical locations; self-supporting; operated as a public authority since 1996
- Ranked among America's Best Hospitals by US News and World Report
- Ranked among top 10 academic health centers for quality and safety, named a Five Star health care organization by University HealthSystem Consortium
- Named one of the nation's 100 Top Hospitals and 100 Top Cardiovascular Hospitals by Thomson (formerly Solucient)
- Named Consumer Choice hospital for Dane, Iowa and Columbia counties by National Research Corp.
- Named to the Leapfrog Group's 2006 Top Hospitals list for quality and safety

UWHC Clinics

- More than 80 outpatient specialty clinics at 9 locations
- Includes outpatient surgery center and ambulatory procedure center

American Family Children's Hospital

- 61-bed pediatric hospital with over 30 pediatric specialty outpatient clinics
- Special services include hospital school, child life program, pediatric positive image center and 23 bed state-of-the-art pediatric intensive care unit
- Physician staff are School of Medicine and Public Health faculty, representing 35 pediatric subspecialties

UW MEDICAL FOUNDATION

- Nonprofit medical foundation organized for the benefit of UW School of Medicine and Public Health and to act as the practice plan for more than 980 faculty physicians and 2,080 non-physician staff
- Largest medical group in Wisconsin and among largest in the nation
- Operates 30 clinics
- Physicians provide care at UWHC, Meriter, St. Marys, William S. Middleton Veterans and other Wisconsin hospitals

UWMF Clinics

- 30 clinic sites in Columbia, Dane, Dodge, Jefferson, and Marquette counties
- Includes primary care clinics, multispecialty sites, substance abuse/behavioral health clinic, ambulatory surgery center and cosmetic surgery center

UW SCHOOL OF MEDICINE AND PUBLIC HEALTH

- More than 1,100 faculty in 11 basic science departments and 16 clinical departments that include primary care, specialty and subspecialty areas
- Faculty engage in teaching and/or research and/or clinical activities
- Physician faculty practice at more than 60 locations, including UWHC, Meriter, St. Mary's, William S. Middleton Veterans and other Wisconsin hospitals
- Basic, clinical and population health research is funded by grants from NIH, other federal agencies and industry sponsors
- Comprehensive educational offerings for training medical students, residents and fellows—also opportunities for PhDs, master's in public health, physicians assistants, physical therapy, clinical lab science and continuing medical education

Department of Family Medicine

- 8 clinics located in Madison, Verona, Belleville, Appleton, Augusta, Eau Claire and Wausau; residents also serve as staff at several Milwaukee clinics
- Rural training track in Baraboo

UNITY HEALTH PLANS INSURANCE CORPORATION

- Over 88,000 member health plan serving 20 counties in south central Wisconsin
- Offers a range of insured products for groups and individuals, including HMO and POS

UW PAUL P. CARBONE COMPREHENSIVE CANCER CENTER

- One of 41 National Cancer Institute-designated comprehensive centers nationwide
- Collaborations with community cancer centers across the state and in northern Illinois
- Faculty of more than 250 physicians, physician-scientists and basic researchers across the UW-Madison campus
- Operates CancerConnect
- 200-250 clinical trials ongoing at any given time

UNIVERSITY HEALTH CARE

- Nonprofit organization sponsored by UWHC, UWMF and UWSMPH
- Dedicated to the development and management of regional relationships including hospital affiliations, outreach clinics, referring provider advocacy and cancer networks
- Responsible for insurance contracting with HMOs, PPOs, reinsurers and other commercial payors
- Serves as the external "agent" working on behalf of UW Health and supports business development throughout the region

REGIONAL PARTNERSHIPS

- UW Health Partners Watertown Regional Medical Center